

1668

11660

11645

11648

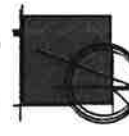
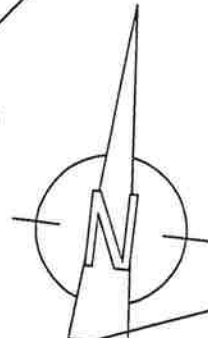
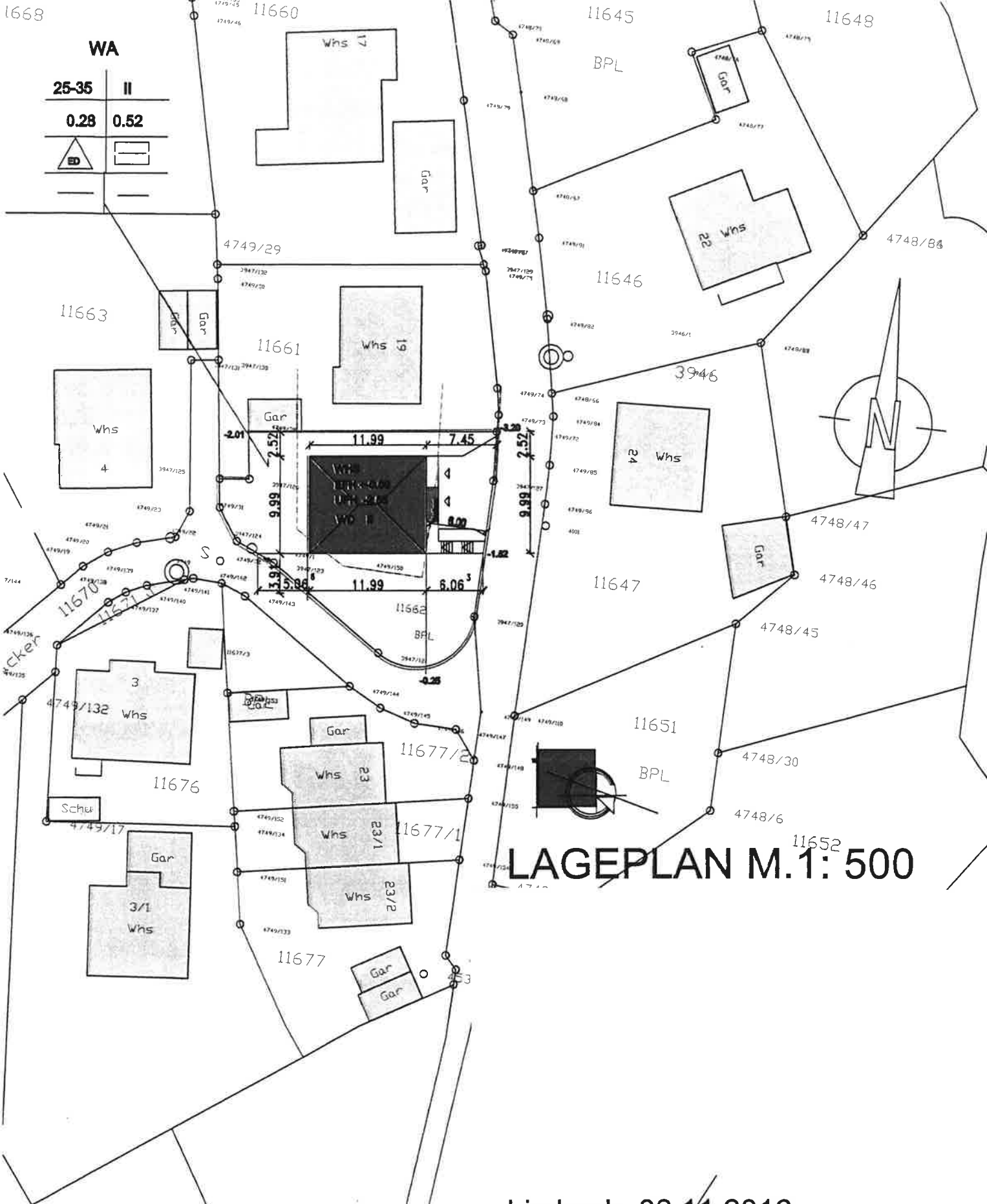
WA

25-35

II

0.28

0.52



# LAGEPLAN M.1: 500

Vermerk:

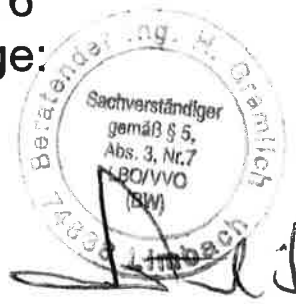
Graph: Dateiauszug vom 29.10.2016 G6513826

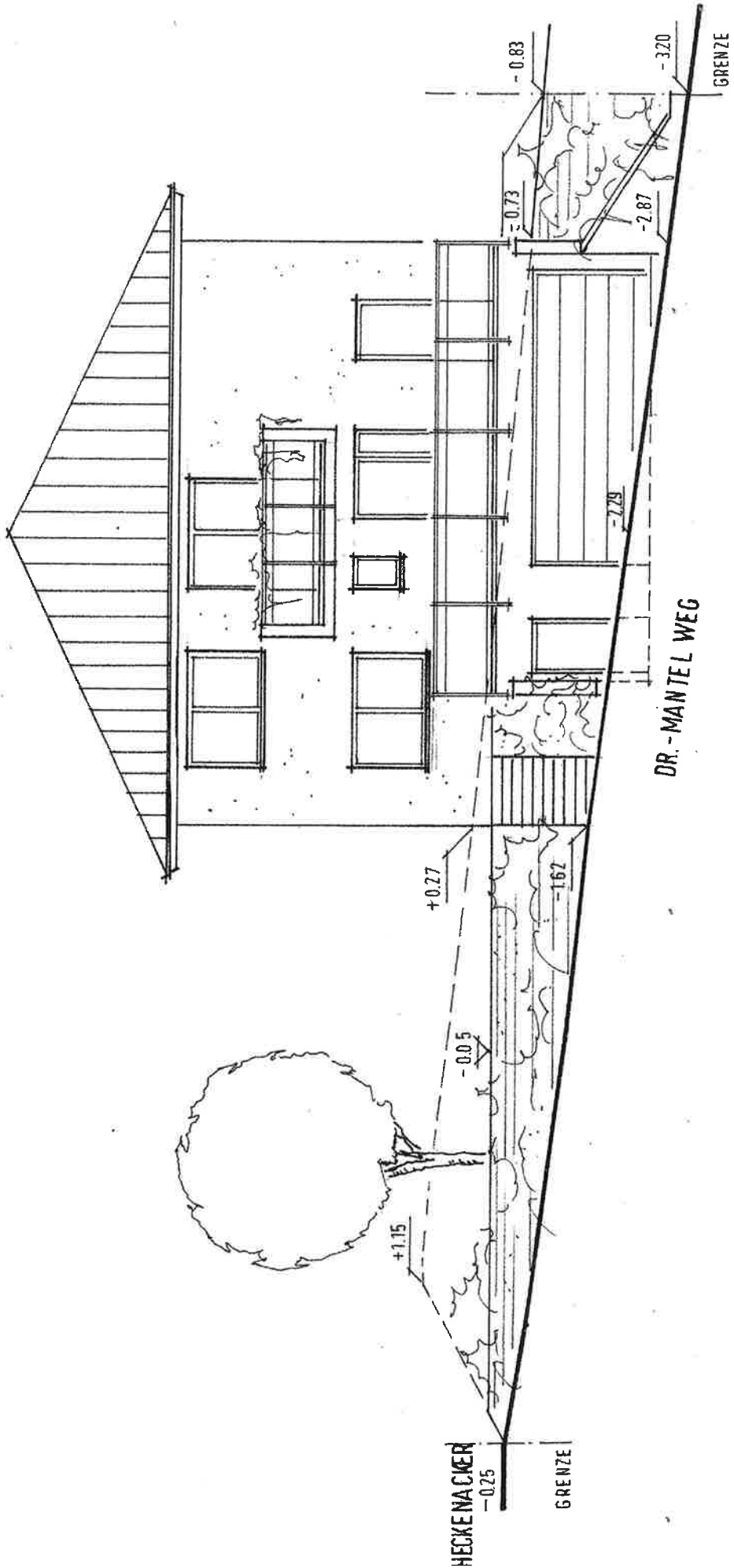
Geobasisdaten: LGL, www.lgl.bw.de

Der Wert des Punktoris ist zu beachten

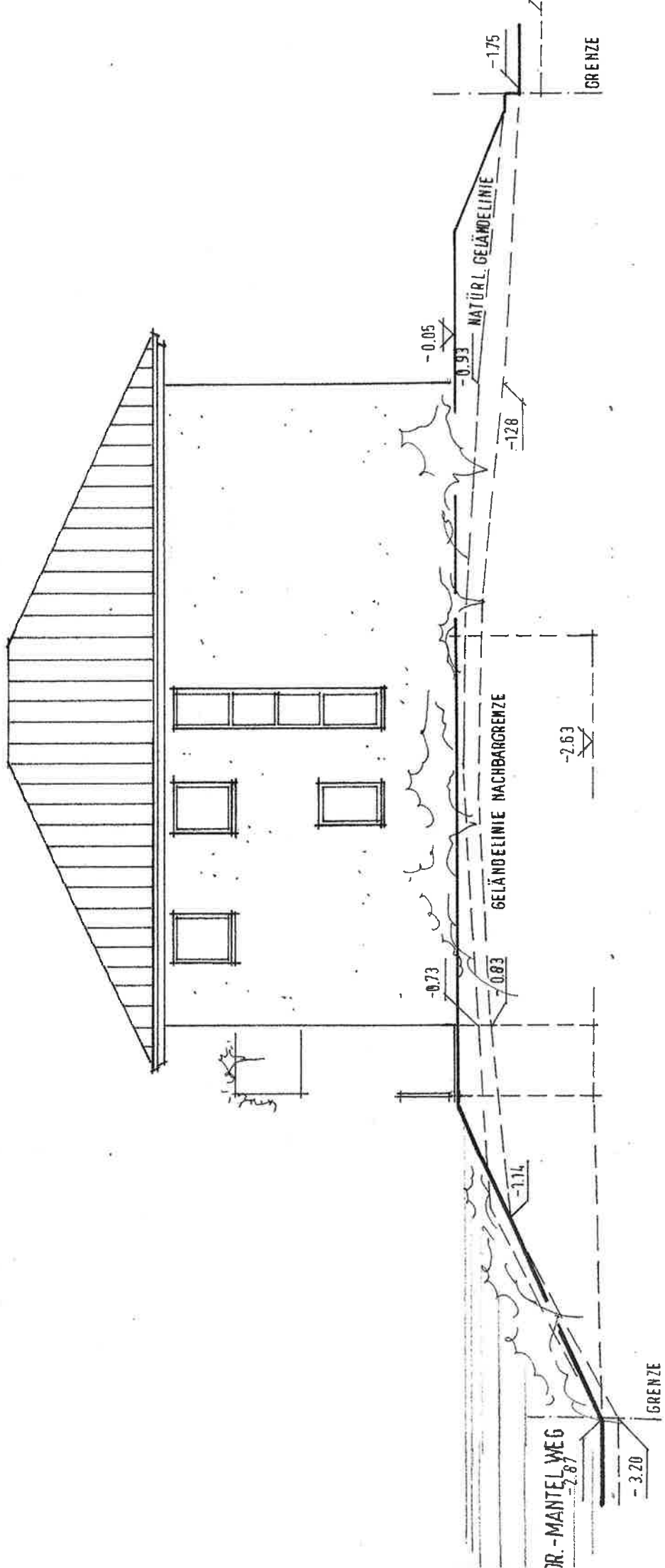
Limbach, 02.11.2016  
Der Sachverständige:

**INGENIEURBURO FÜR BAUSTATIK  
GRAMLICH + PARTNER VDI  
BERATENDE INGENIEURE  
HIRSCHBERGST. 53 TEL 06207 9203-0  
74838 LIMBACH/ODW**

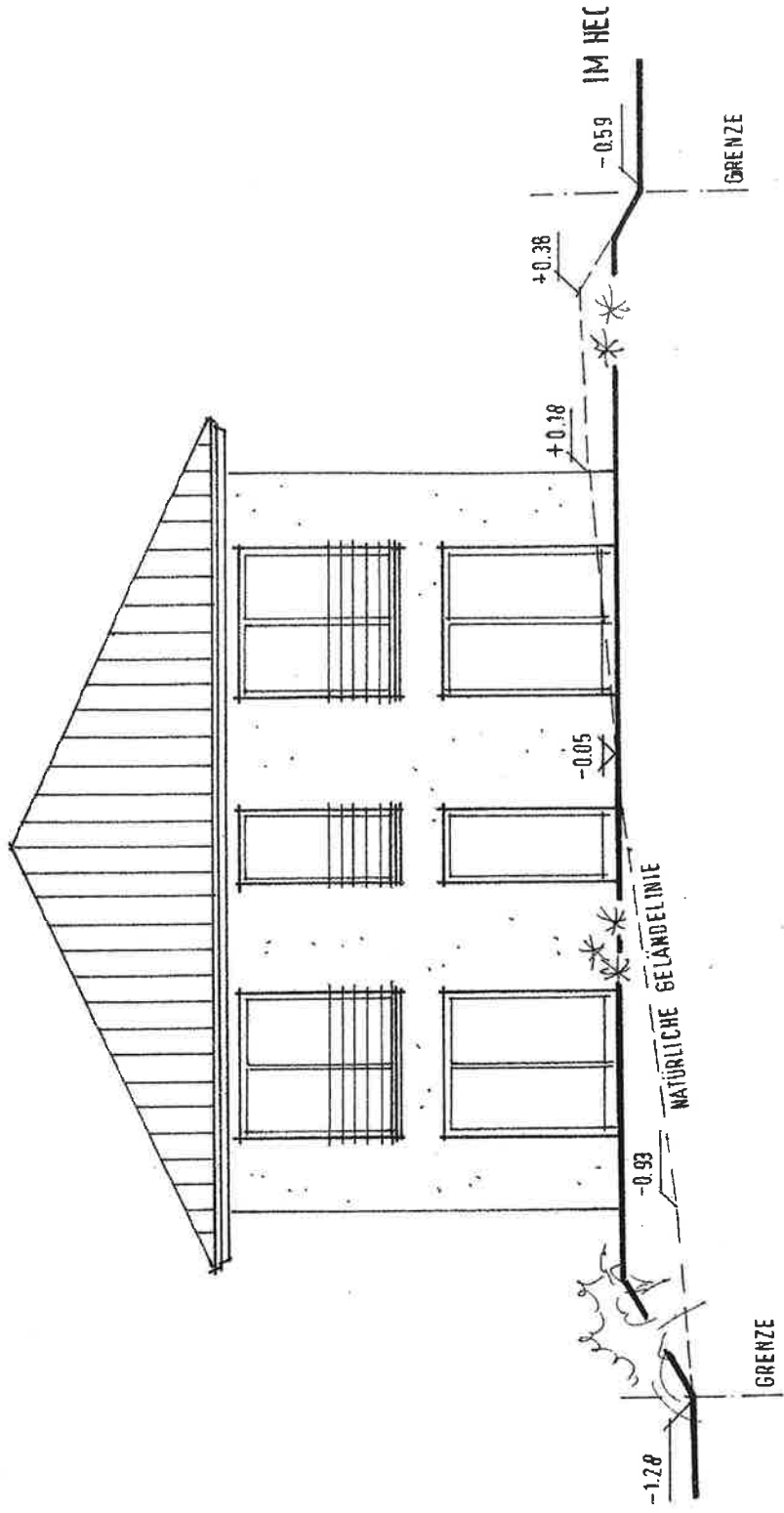




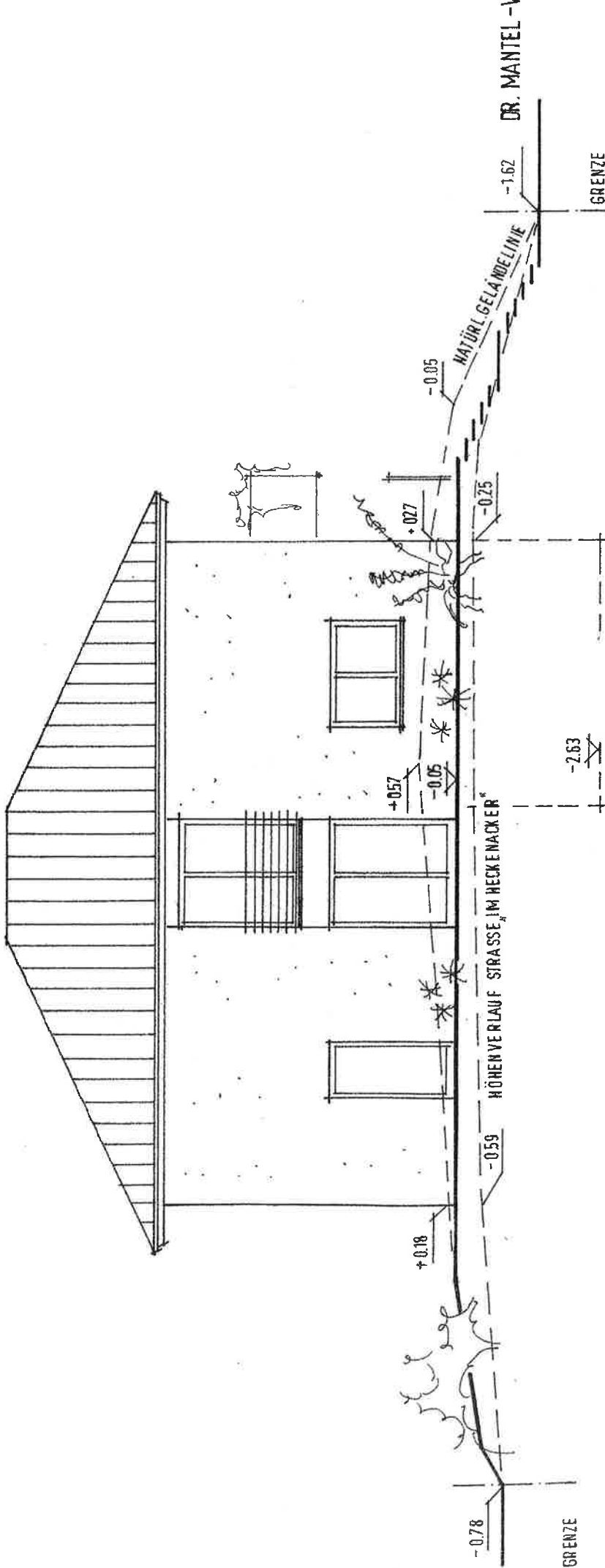
OSTEN



NORDEN



WESTEN



SÜDEN